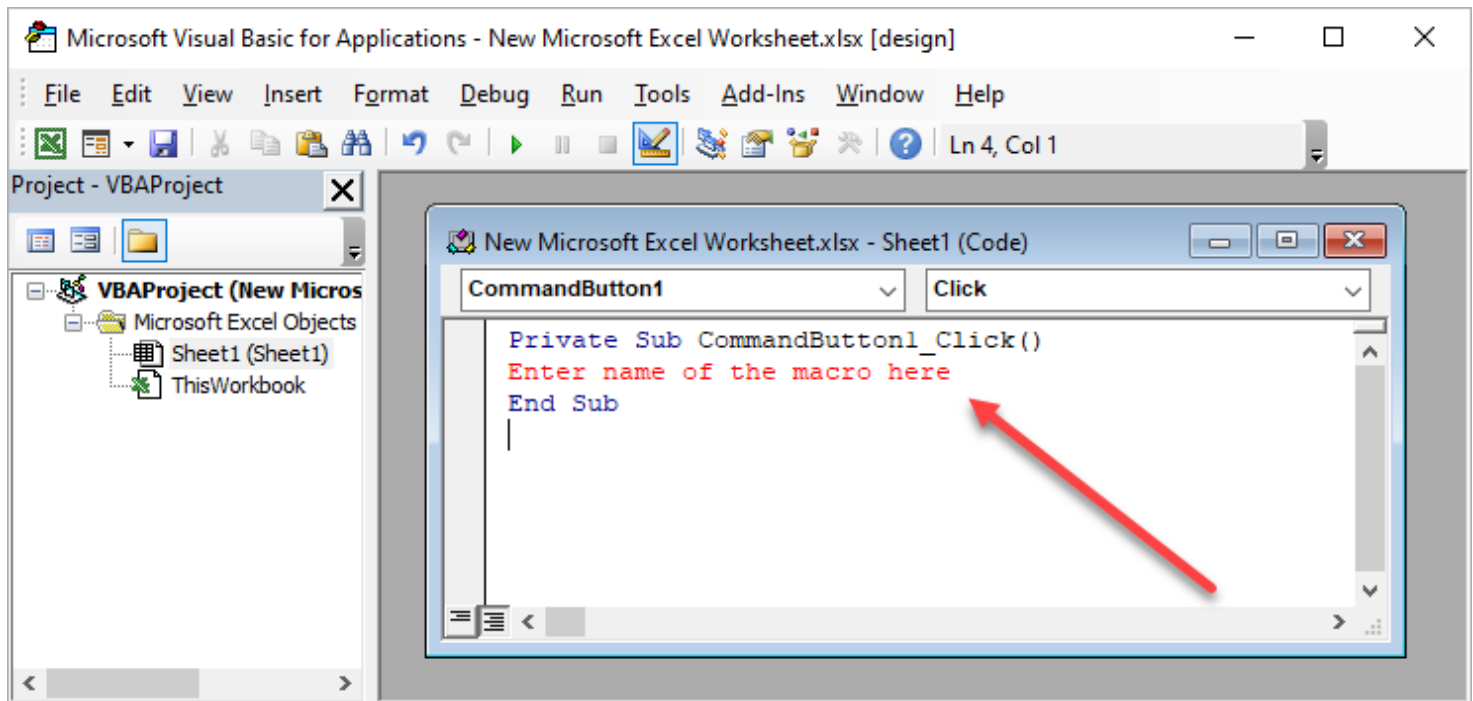


It is interesting to execute a macro by clicking on a button

To attach a macro to a button, you obviously need a button!

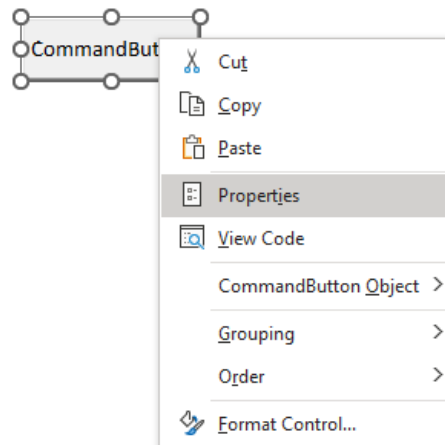
The easiest way to assign the macro to the button is to click the button while being in design mode.

To enable "**Design**" mode or return to normal mode:

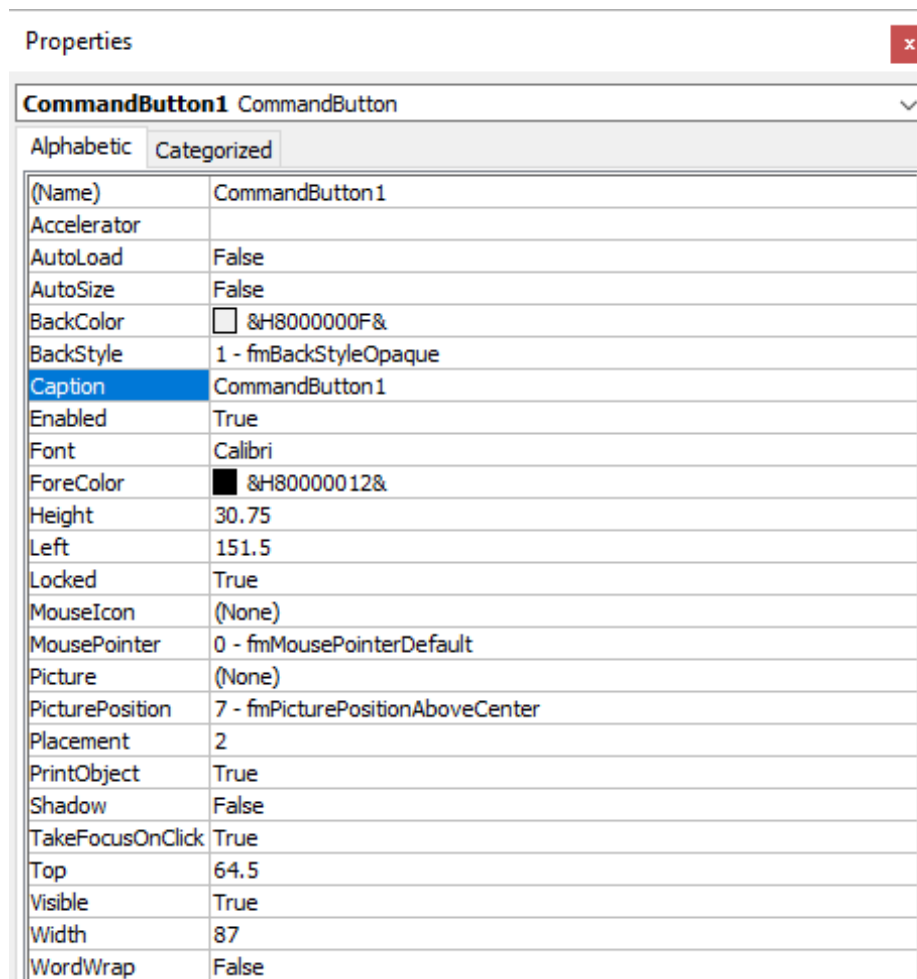


You can close this window after inserting the name of the macro.

To customize the name of the button, right-click on it.



Choose the “**Properties**” option.



The "**Caption**" property allows you to customize the name displayed on the button. Each of the properties allows you to customize color, change the font, etc.

When you are done, click outside the button and turn off **Design mode** so you can use your button.